



# Bonar Yarns & Fabrics Division

Low & Bonar



# YARNS & FABRICS DIVISION

- Serving technical Market Segments
- Polyolefin Extrusion Technology
- Applications
  - Woven Fabrics
  - Non Woven Fabrics
  - Yarns
  - Fibers



# YARNS & FABRICS DIVISION

## MANUFACTURING LOCATIONS

1. Yarns : Dundee
2. Fibers : Beverley
3. Woven Fabrics :
  - Lokeren (B)
  - Yizheng ( China )
4. Non Woven Fabrics : Zele ( B )



# PRODUCTS

Low & Bonar



# YARNS & FABRICS DIVISION

## PRODUCTS

### 1. Artificial Sport Grass





# YARNS & FABRICS DIVISION

## PRODUCTS

### 2. Carpet Backing Yarns



Low & Bonar



# YARNS & FABRICS DIVISION

## PRODUCTS

### 3. Geo-textile → Woven





# YARNS & FABRICS DIVISION

## PRODUCTS

### 3. Geo-textile → Non Woven





# YARNS & FABRICS DIVISION

## PRODUCTS

### 4. Screens for Greenhouses

Energy screens – Shadowing screens – Darkening screens





# YARNS & FABRICS DIVISION

## PRODUCTS

### 5. Ground Cover

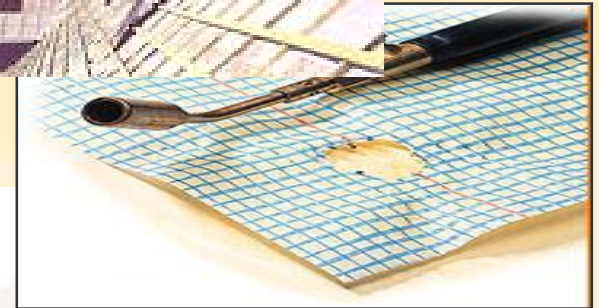
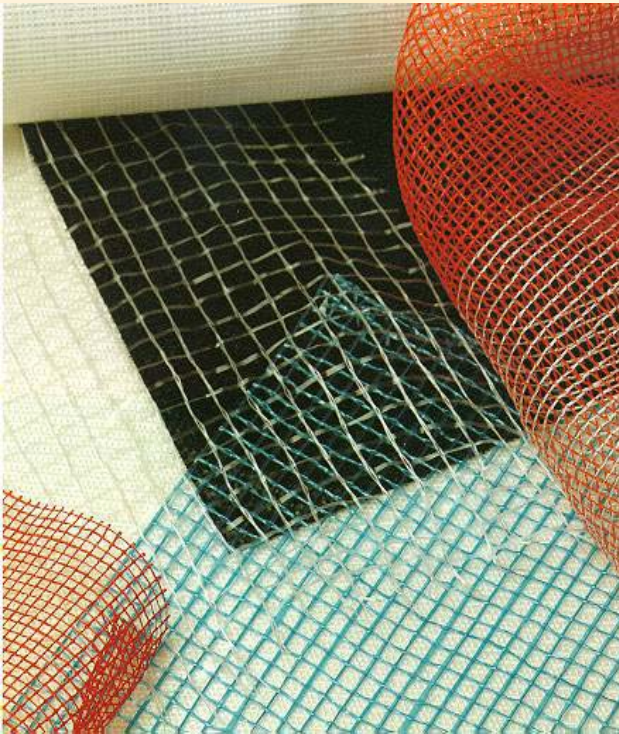




# YARNS & FABRICS DIVISION

## PRODUCTS

### 6. Industrial Woven Fabrics





# YARNS & FABRICS DIVISION

## PRODUCTS

1. Artificial Sport Grass
2. Carpet Backing Yarn
3. Geo Textile Fabrics
  1. Woven
  2. Non Woven
4. Screens for Green Houses
  1. Energy screens
  2. Shadowing screens
  3. Darkening screens
5. Ground Cover
6. Industrial Woven Fabrics
7. Fibers for Concrete



# YARNS & FABRICS DIVISION

## STRATEGY

### 1. Invest in Growth Market Segments

- Non- Woven : → £ 2.5 m Capacity Upgrade Belgium
- Sports Grass : → £ 1.0 m Capacity Upgrade Dundee  
→ Acquisition Yihua Bonar

### 2. Invest in our market leadership

- Screens : → Expand into knitting technology

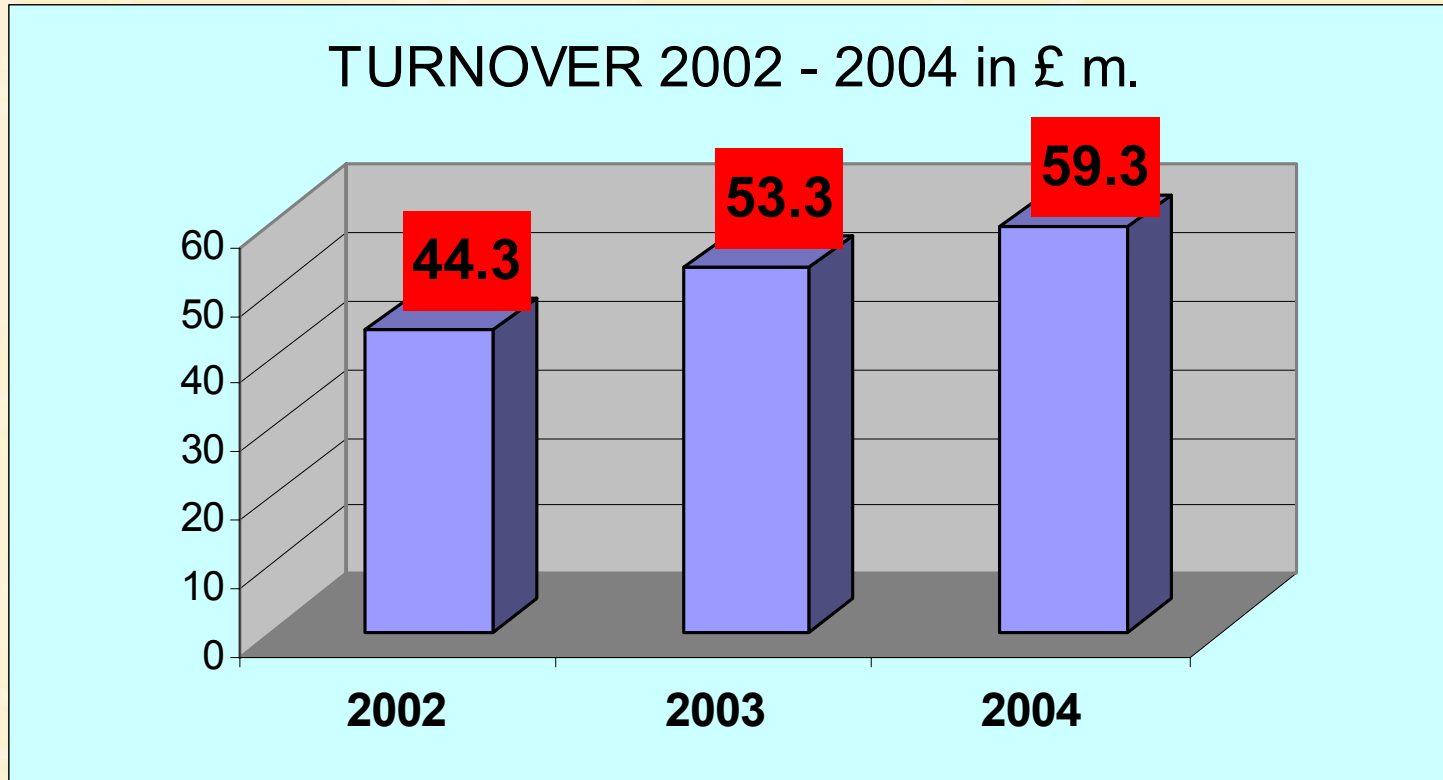
### 3. Acquire Market leadership in new market segments

- Adfil → Adfil

### 4. Continuous investment in productivity

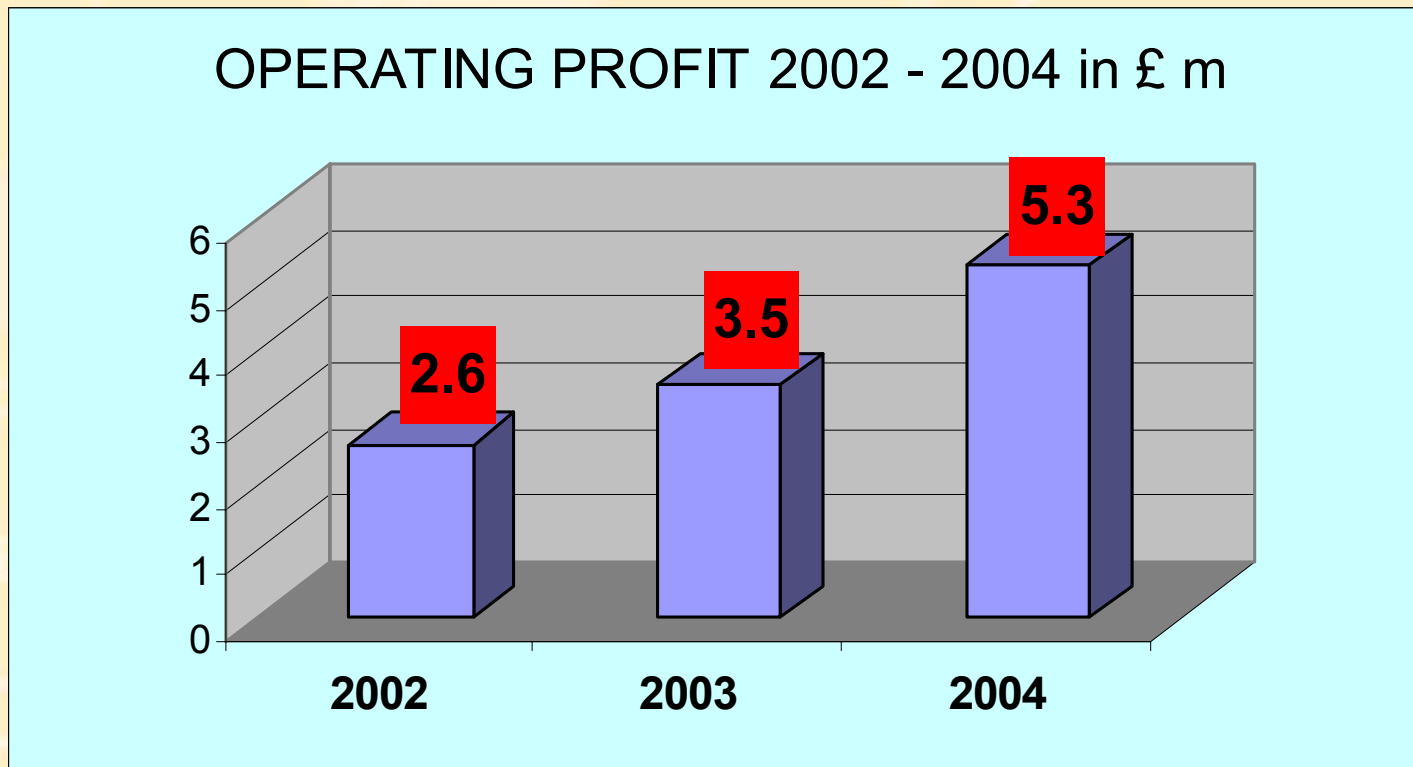


# TURN OVER





# OPERATING PROFIT





# YIHUA BONAR YARNS & FABRICS

Low & Bonar



儀化博納俄物有限公司

YIHUA BONAR YARNS AND FABRICS COMPANY LIMITED

27. 8. 2004 09:2



27 8 2004 09



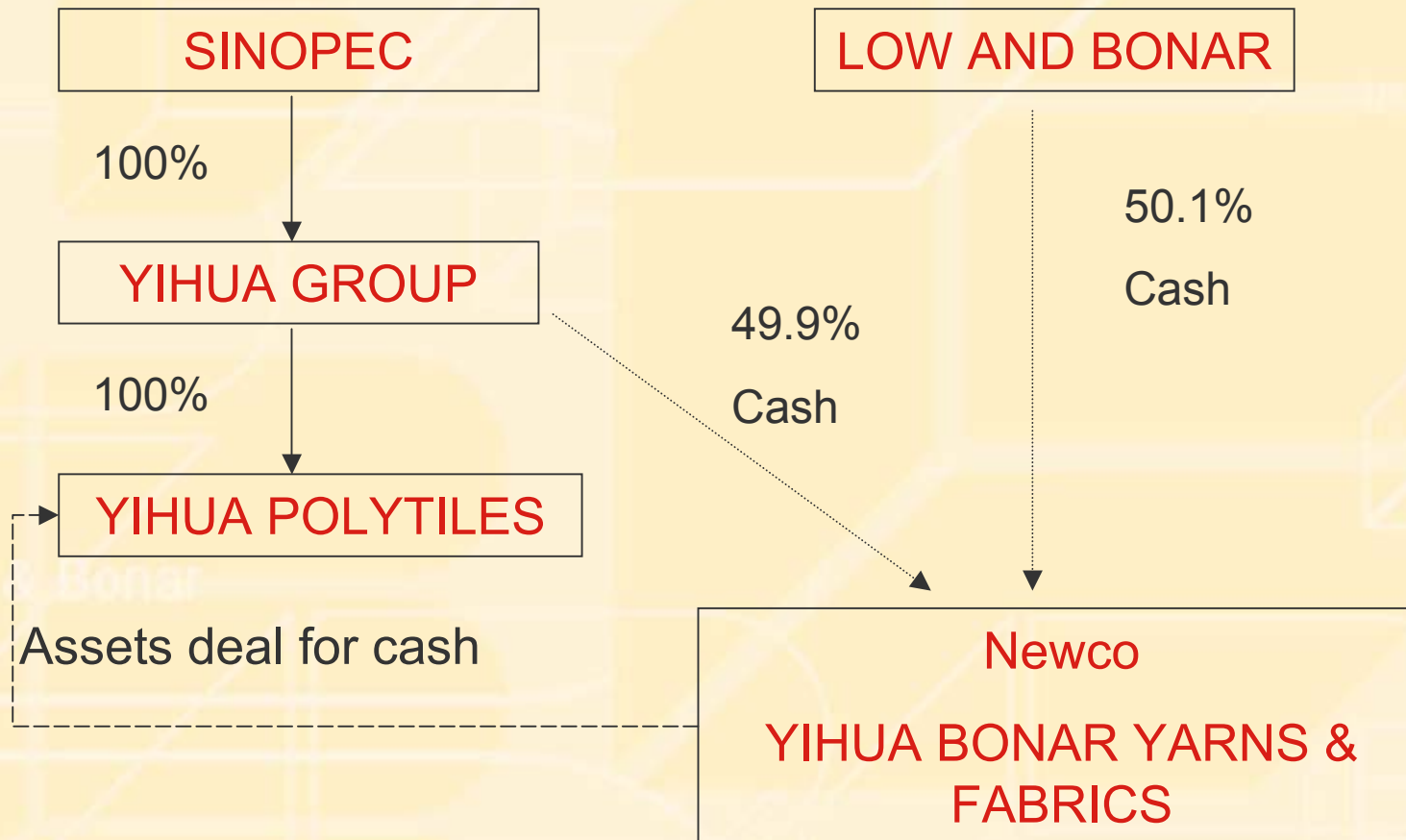
## Company Details

- 180 people
- £ 7 Mio sales ( 20% export )
- Share capital : £ 4 mio

Low & Bonar



# Transaction background





## Product range ( Woven Fabrics )

- Turf Backing : 20%
- Carpet Backing : 65%
- Woven Geo-Textiles : 15%

Low & Bonar



## Strategic reason for acquisition

- Low Cost Country
- Gate to Asia / North America ( usd )
- Synergies :
  - Artificial grass
  - Woven fabrics
  - Other segments



**ADFIL**



## Company Details

- 60 people
- £ 10 Mio sales
- Beverley, Yorkshire

Low & Bonar



## What do we do ?

ADFIL manufactures, markets, and sells its range of construction fibres through its direct sales force in the UK, and via a global network of distributors.

Low & Bonar



## Product Range

1. Fibrin / Crackstop – used for durability
2. Ignis – used for passive fire resistance
3. Durus – used to improve structural characteristics.



# ADFIL Fire Resistance Products

- ❑ Kentish Town Cable Tunnel.
- ❑ North Downs Tunnel (410) C.T.R.L.
- ❑ Contracts 103 / 220/ 240 / 320 C.T.R.L.
- ❑ St. Johns to Elstree Cable Contract.
- ❑ De Westerschelde Tunnel, Holland.
- ❑ Dublin Port Tunnel, Eire.
- ❑ Dartford Cable Tunnel.
- ❑ Penchala Tunnel, Kuala Lumpur.
- ❑ Weehawken Project, New York.
- ❑ Mersey Kingsway Cross Passages, Liverpool.
- ❑ Various Tunnels in Norway, Austria.
- ❑ Airside Tunnel & SWOT Tunnel, Heathrow Airport.

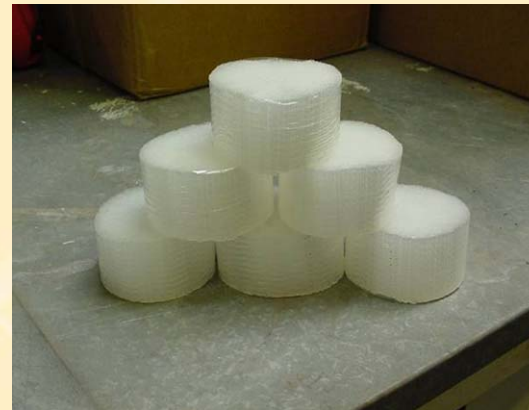
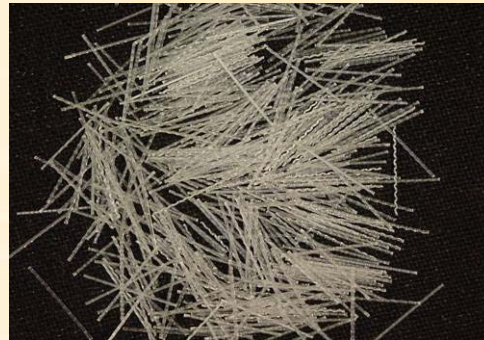




**Durus** ®

**Technical benefits :**

- **alternative to steel mesh and fibres.**
- **additional flexural and overall structural strength.**
- **Unique packaging.**
- **Cost benefits over alternatives / ease of use.**





# Applications

- ❑ Precast concrete.
- ❑ Internal and external floor slabs.
- ❑ Sprayed concrete.





# Strategic Reasons for Acquisitions

1. Market Leader in Technical Market Segment.
2. Compatible Technology
3. Good Growth Pipeline